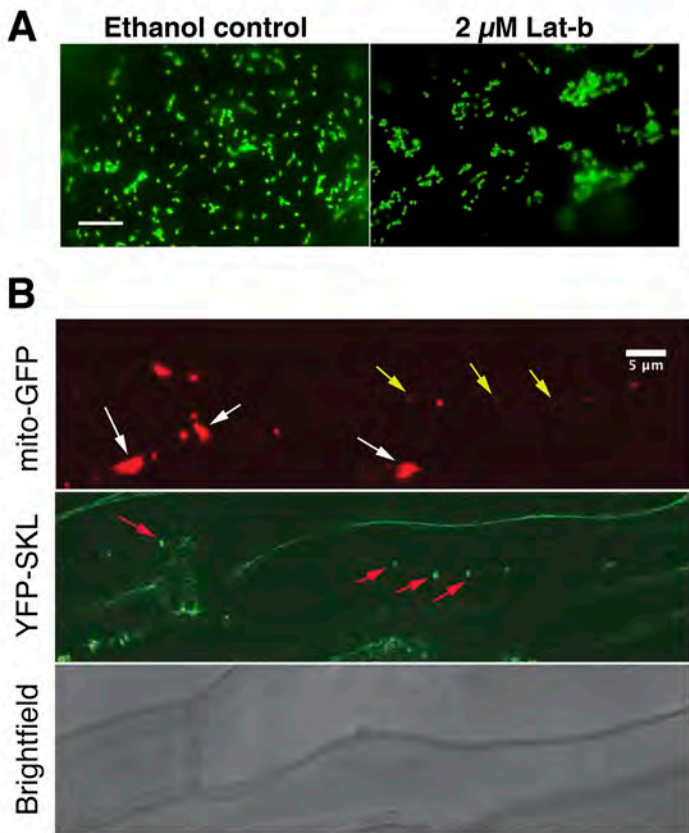


## Supplementary figure 2



**Supplementary figure 2.** (A) Disruption of the actin cytoskeleton can phenocopy for *FRIENDLY* mutation. Mitochondria in a leaf epidermal cell of a wild type mito-GFP seedling treated with either solvent (0.1% ethanol) or with 2  $\mu$ M latrunculin-B. Scale bar = 10  $\mu$ m. (B) Peroxisome distribution is unaffected in *friendly*. Mitochondria (mito-GFP, red) and peroxisomes (YFP-SKL, green) in the *friendly* mutant.