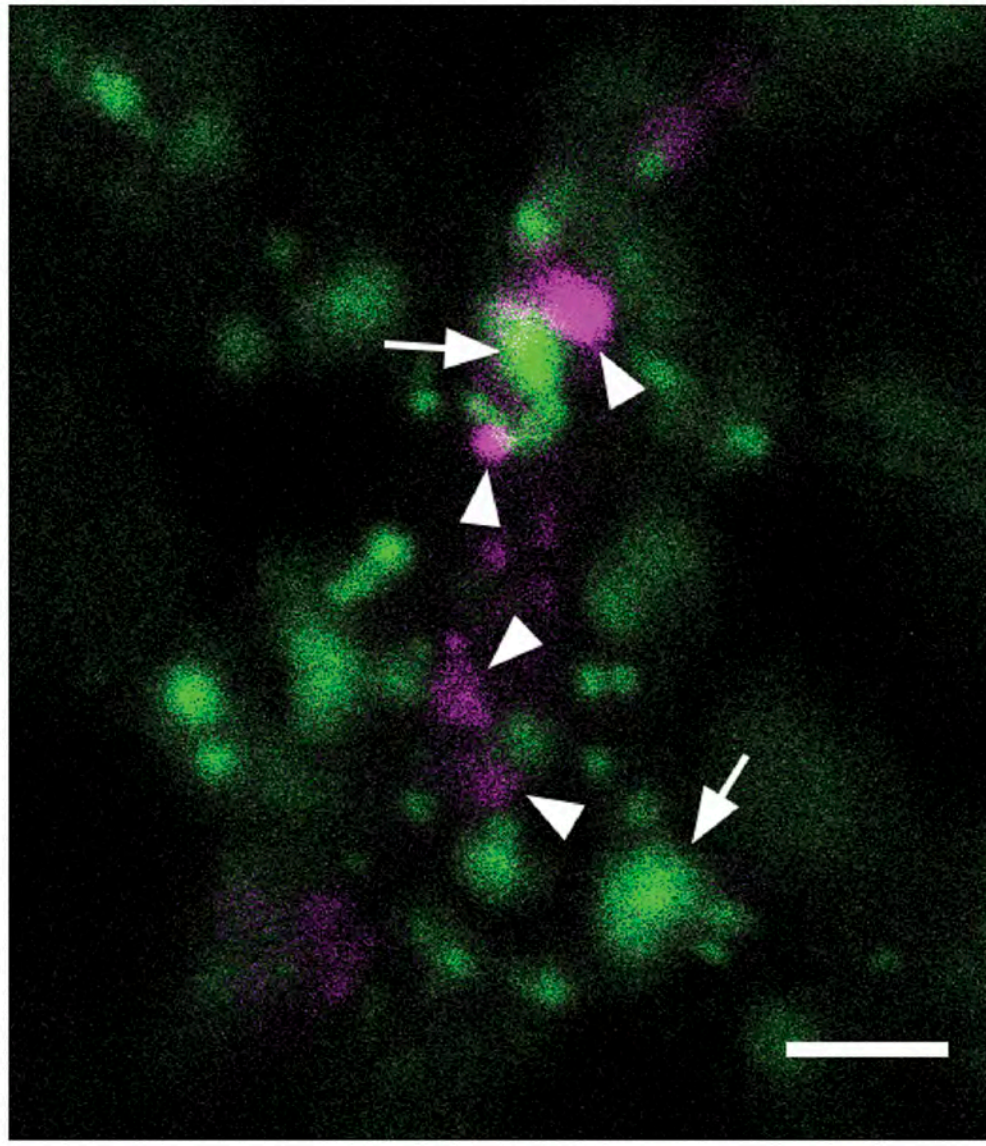
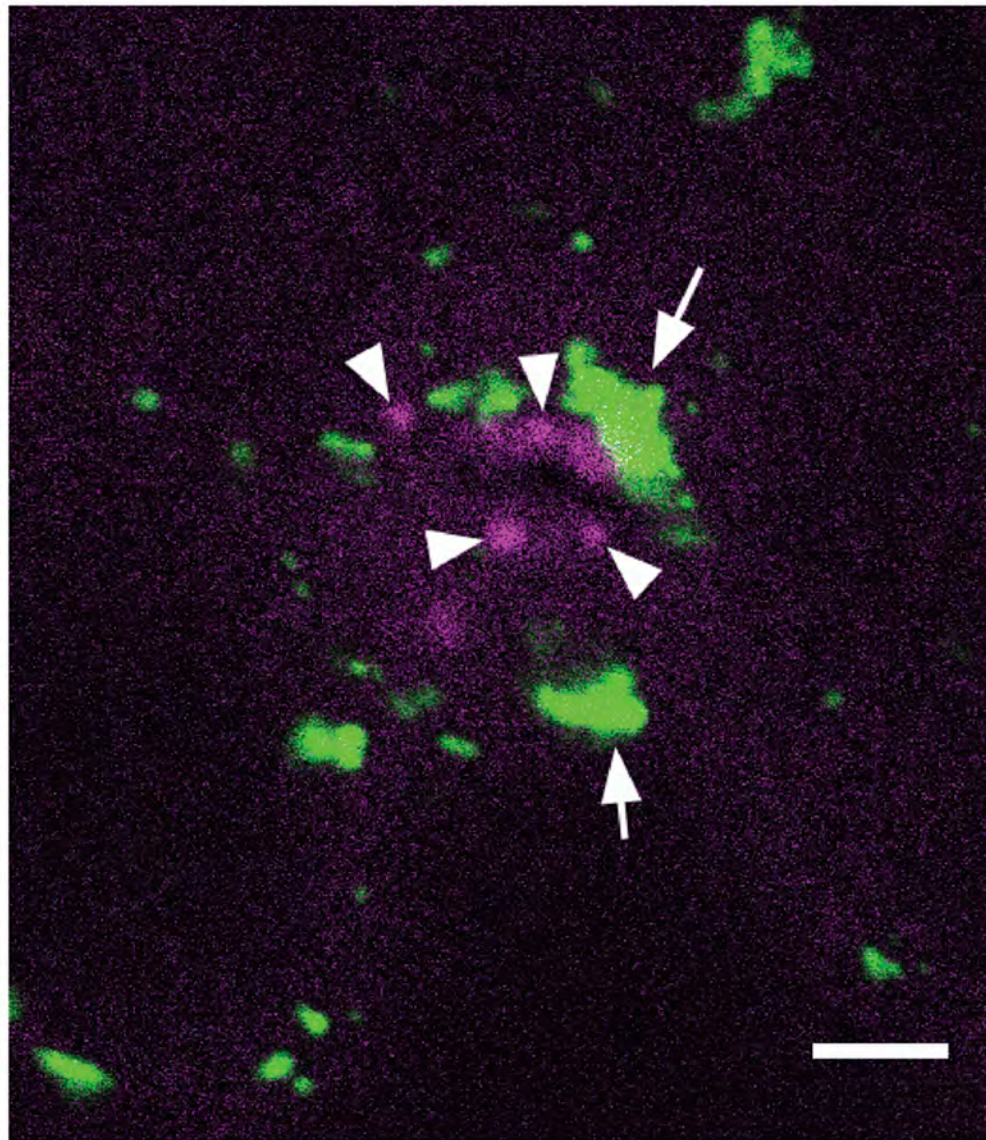


A

35S-FMT-mRFP1

**B**

35S-mRFP1-FMT



Supplementary figure 3. Transient expression of FRIENDLY N- and C-terminal mRFP1 fusions in *friendly* mutant seedlings. (A) FRIENDLY-mRFP1, or (B) mRFP1-FRIENDLY shows a punctate distribution in the cytosol. Arrows indicate mitochondrial clusters (mito-GFP, green) and arrowheads indicate FRIENDLY-mRFP1 or mRFP1-FRIENDLY puncta (magenta). Scale bars = 5 μ m.