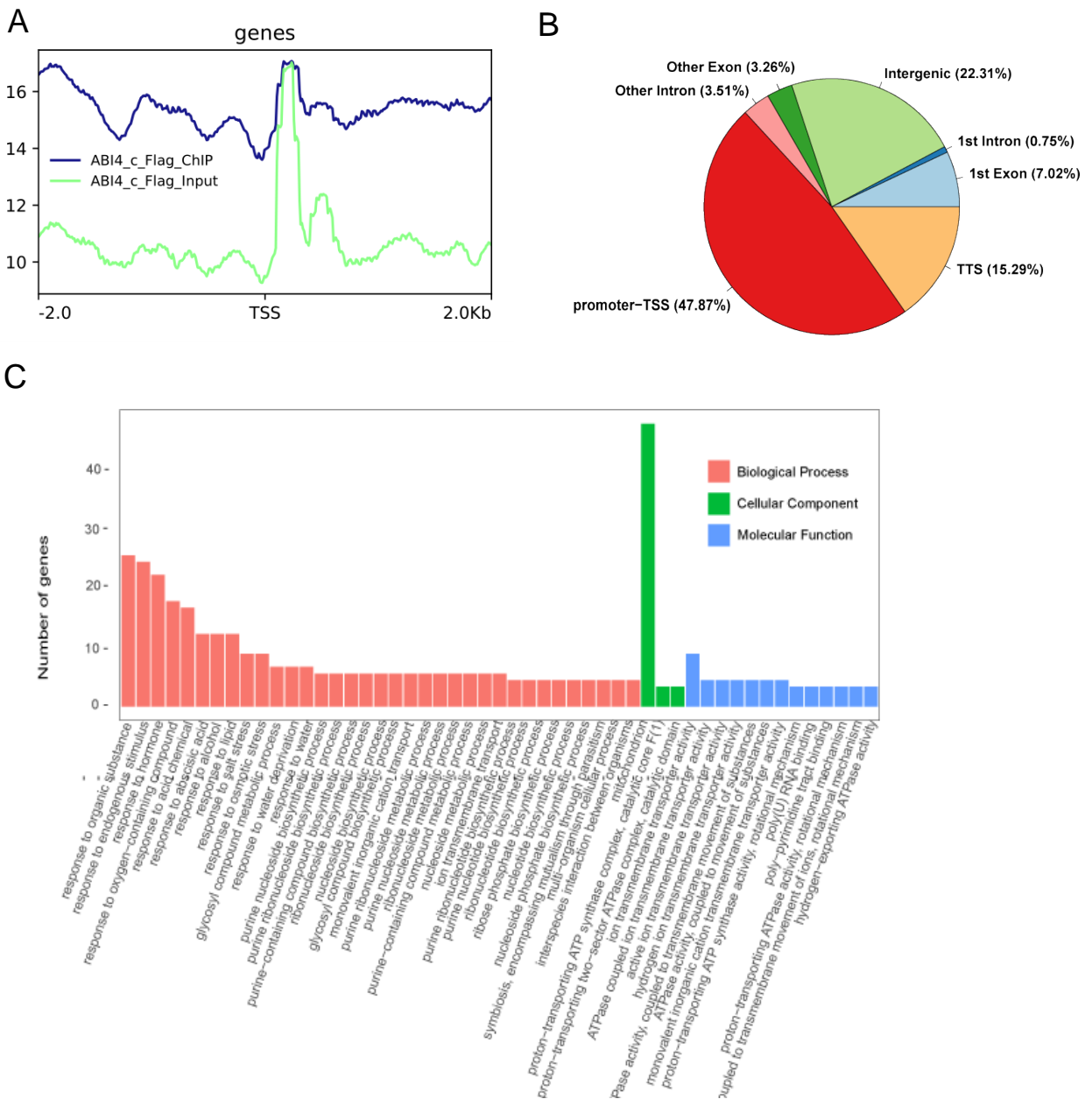


Supplemental Figure 1. Comparison among BR-regulated genes with BES1 target genes, and BZR1 target genes.

(A) and (B), Comparison of genes upregulated (A) or downregulated (B) in 7-day-old seedlings (S1), 24-day-old seedlings(S2) of *cpd*, and previously identified BES1 and BZR1 target genes.

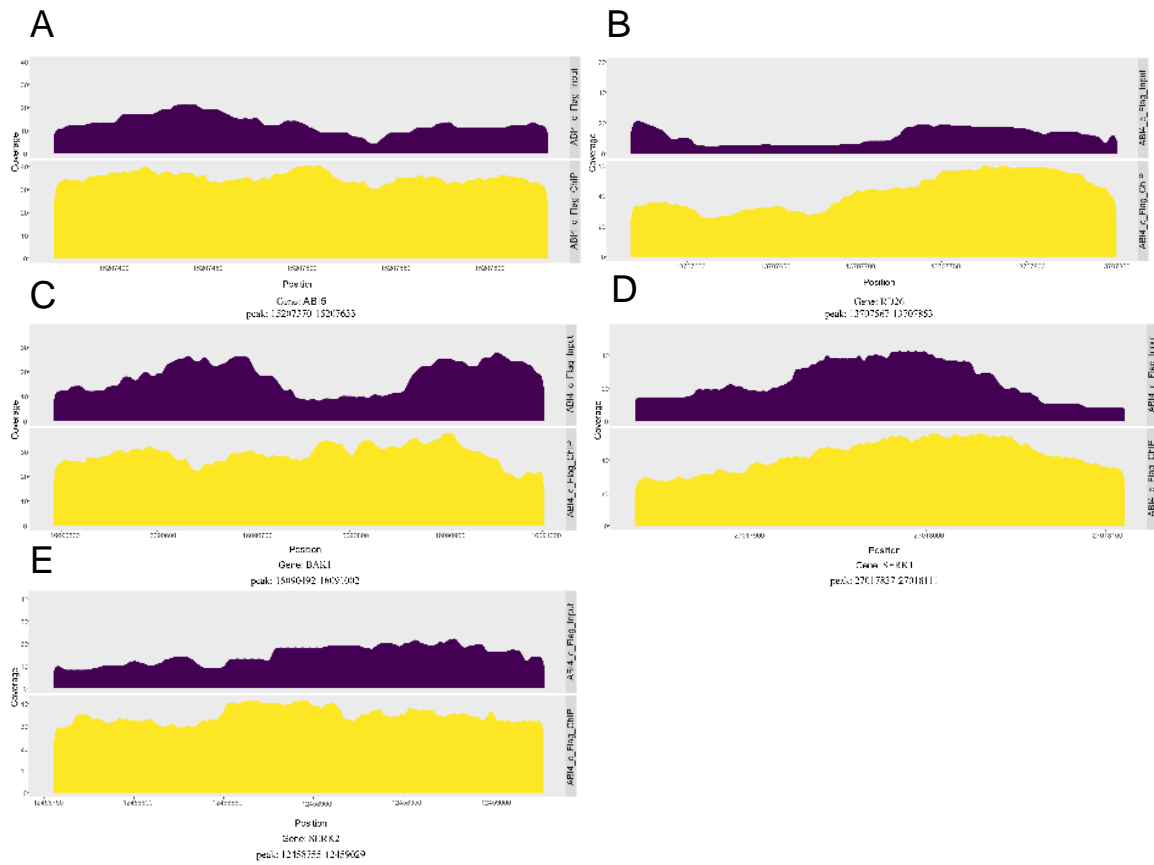


Supplemental Figure 2. Genome-Wide Binding Profiles from ChIP-seq Analysis

A. Distribution of ABI4 binding sites in the genic regions.

B. Statistics of distribution of ABI4 binding sites.

C. GO classification of ABI4 binding targets based on Chip-seq analysis of ABI4-cFlag.



Supplemental Figure 3. Direct Targets of ABI4.

- A. Distribution of ABI4 binding peaks on *ABI5* in the Integrated Genome.
- B. Distribution of ABI4 binding peaks on *RD26* in the Integrated Genome.
- C. Distribution of ABI4 binding peaks on *BAK1* in the Integrated Genome.
- D. Distribution of ABI4 binding peaks on *SERK1* in the Integrated Genome.
- E. Distribution of ABI4 binding peaks on *SERK2* in the Integrated Genome.